

# Getting Started with ARCHICAD 20

**GRAPHISOFT**<sup>®</sup>  
A NEMETSCHEK COMPANY

## **GRAPHISOFT®**

Visit the GRAPHISOFT website at [www.graphisoft.com](http://www.graphisoft.com) for local distributor and product availability information.

### **Getting Started with ARCHICAD 20**

Copyright © 2016 by GRAPHISOFT, all rights reserved. Reproduction, paraphrasing or translation without express prior written permission is strictly prohibited.

### **Trademarks**

ARCHICAD® is a registered trademark of GRAPHISOFT.  
All other trademarks are the property of their respective holders.

---

# Content

<b>The ARCHICAD 20 Package</b> _____	<b>5</b>
<b>ARCHICAD 20</b> _____	<b>6</b>
<b>Hardware/Software Requirements</b> . . . . .	<b>6</b>
<b>Install ARCHICAD 20: Single License</b> . . . . .	<b>6</b>
<b>ARCHICAD Licensing</b> . . . . .	<b>16</b>
<b>Add/Repair ARCHICAD</b> . . . . .	<b>19</b>
<b>Updates</b> . . . . .	<b>20</b>
<b>Compatibility Information</b> . . . . .	<b>21</b>
<b>Tools and Utilities</b> . . . . .	<b>22</b>
<b>Uninstall ARCHICAD</b> . . . . .	<b>24</b>
Silent Uninstall . . . . .	24
<b>BIM Server for ARCHICAD 20</b> _____	<b>26</b>
<b>Hardware/Software Requirements</b> . . . . .	<b>26</b>
<b>Compatibility with ARCHICAD Clients</b> . . . . .	<b>26</b>
<b>Migrating the BIM Server</b> . . . . .	<b>26</b>
<b>BIM Server Installation</b> . . . . .	<b>27</b>
BIM Server Configuration, Step By Step . . . . .	28
<b>BIM Server Licensing</b> . . . . .	<b>33</b>
<b>Updates</b> . . . . .	<b>34</b>
Upgrade BIM Server to BIMcloud . . . . .	34
<b>Uninstall BIM Server</b> . . . . .	<b>35</b>
<b>ARCHICAD Network Installation (Instructions for BIM Managers)</b> _____	<b>36</b>
<b>Using a CodeMeter Server</b> _____	<b>52</b>



# The ARCHICAD 20 Package

## ARCHICAD 20

ARCHICAD is a powerful modeling application which enables architects to design buildings more productively, based on the Virtual Building™ approach. ARCHICAD allows architects to focus on design, either alone or in Teamwork, while also exchanging data smoothly with consultants and professionals in other fields.

## GRAPHISOFT BIM Server for ARCHICAD 20

The GRAPHISOFT BIM Server is a server application necessary to support Teamwork, a client-server technology that enables fast, simultaneous access to projects for multiple clients. The GRAPHISOFT BIM Server is connected through the network to several ARCHICADs, which are the clients in this system.

Each installation process is described in detail in this booklet.

## Download

The entire ARCHICAD 20 package is available for download at:

<http://www.graphisoft.com/downloads/>

# ARCHICAD 20

## Hardware/Software Requirements

Hardware/Software requirements are modified from time to time. For up to date information on system requirements, please consult the following link:

[http://www.graphisoft.com/support/system\\_requirements](http://www.graphisoft.com/support/system_requirements)

## Install ARCHICAD 20: Single License

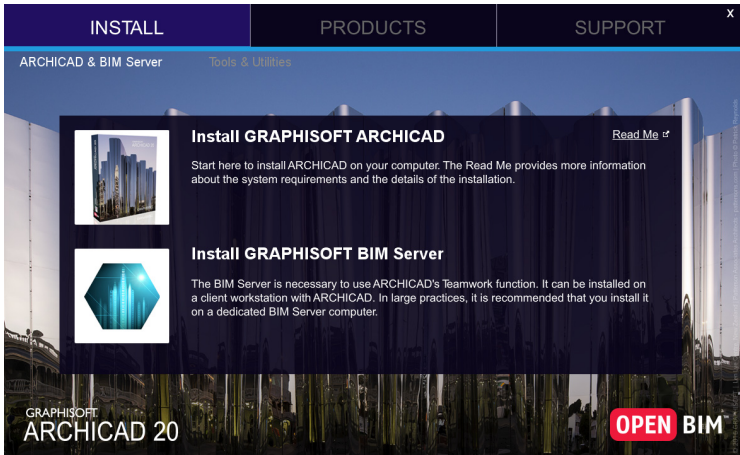
In the following pages, we take you through the process of installing the ARCHICAD program at a stand-alone workstation.

Simply insert the ARCHICAD DVD into your computer's DVD-ROM drive, or download ARCHICAD 20 to your computer.

*See ["Download" on page 5.](#)*

## 1) Start-up Presentation

Insert the ARCHICAD DVD, or double-click (extract) the ARCHICAD 20 Download folder. The start-up presentation will be launched.



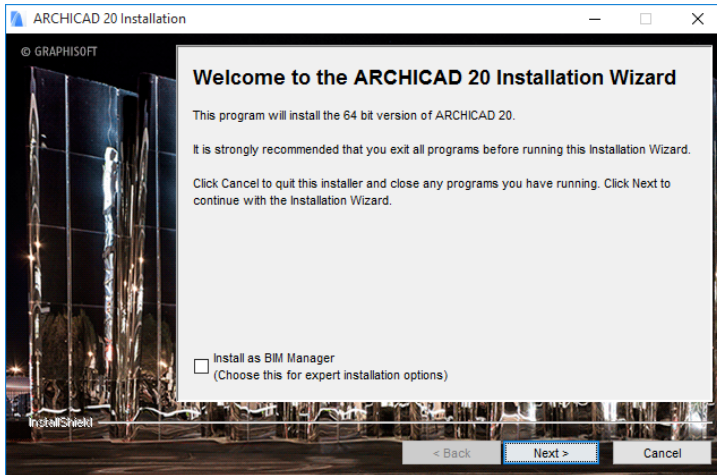
## 2) Start Installation Wizard

Click on **Install GRAPHISOFT ARCHICAD** to start the ARCHICAD Installation Wizard.

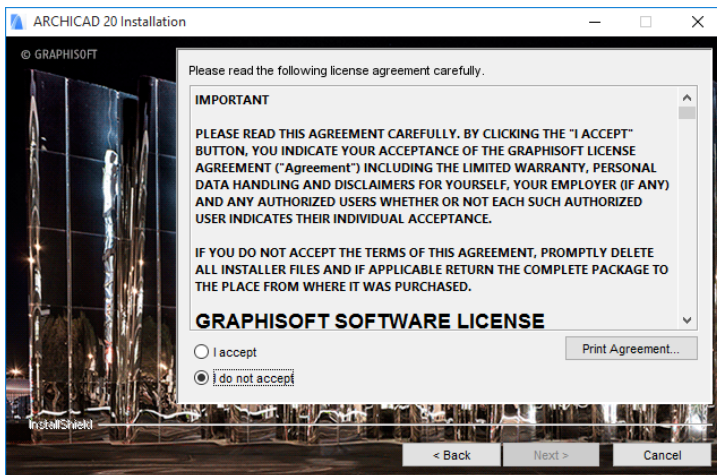
## 3) Welcome Screen

Make sure that you close all running programs before you proceed with the installation.

Click **Next** to continue.



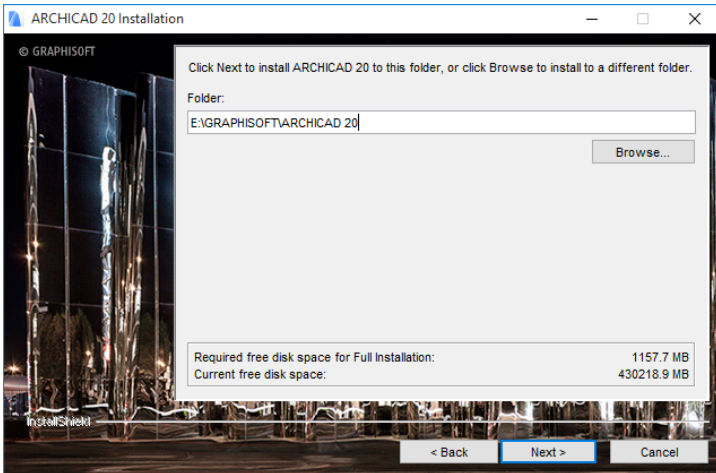
#### 4) License Agreement





Read the license agreement carefully and accept it, then click **Next**.

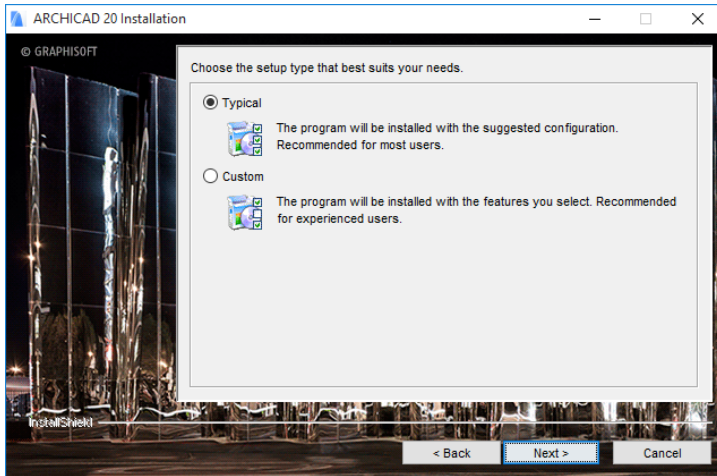
## 5) Program Folder Selection



On this page, define the file path of the installation. As a rule, you should choose the path suggested by default, to simplify the installation of any future updates.

To confirm the file path, click **Next**.

## 6) Choose Setup Type

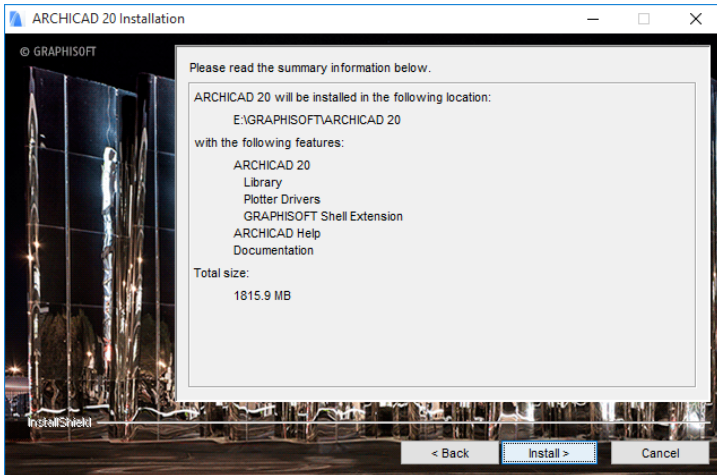


With the “Typical” installation option (recommended), you will install ARCHICAD 20 together with all of its components (e.g. Library, documentation, ARCHICAD Help).

Alternatively, choose the “Custom” installation option to install only specific program components.

After you make your choice, click **Next**.

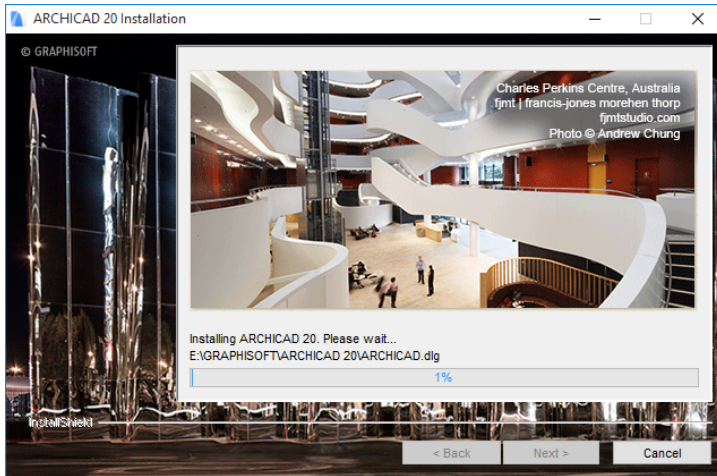
## 7) Installation Summary



This screen summarizes your chosen configuration, so you can make any needed corrections to the installation settings.

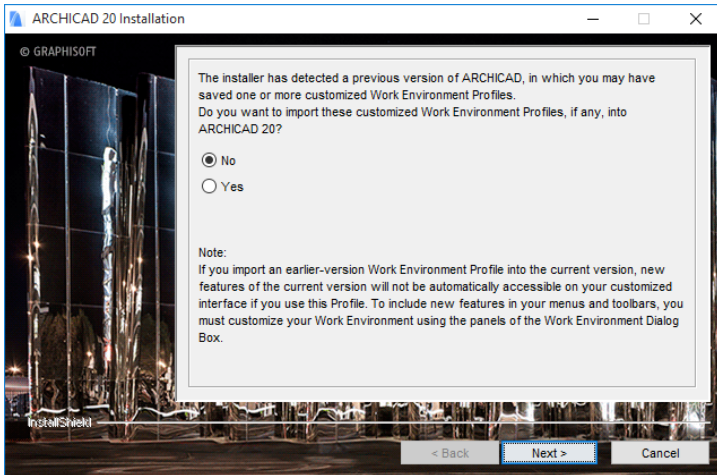
Click **Install** to begin installation.

## 8) Installation



Depending on your Hardware configuration, this process may take several minutes.

## 9) Import Work Environment

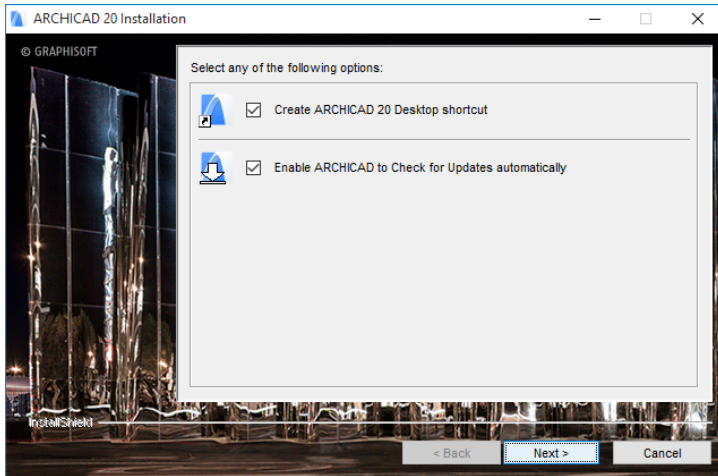


This screen appears if the installer detects an earlier version of ARCHICAD on your machine. If you choose **Yes**, your latest Work Environment settings from the older-version ARCHICAD will be imported to ARCHICAD 20.

**Note:** When you import the Work Environment settings of an older version of ARCHICAD, the new features and commands of ARCHICAD 20 will not automatically be visible. In this case, use the Work Environment Menu settings to include the new commands.

Confirm your choice by clicking **Next**.

## 10) Shortcuts/Automatic Updates



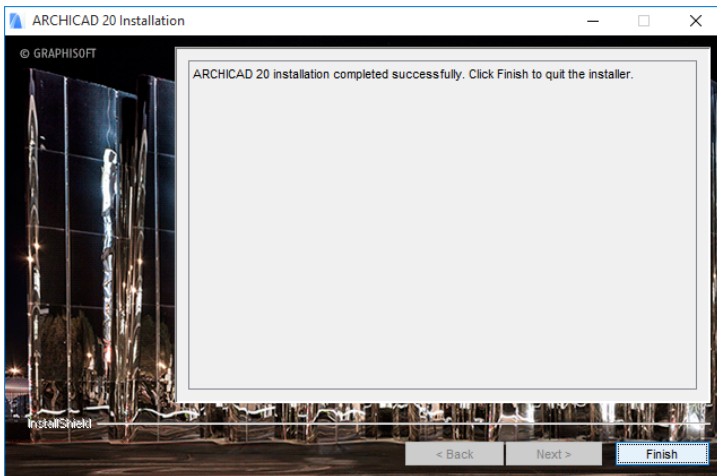
Here you can create an “ARCHICAD 20” Desktop shortcut.

Review the setting to **Enable ARCHICAD to Check for Updates automatically** (checked by default).

Confirm your choices by clicking **Next**.

**11)** If the installation process includes installing CodeMeter, you are prompted to restart your computer now.

## **12) Complete Installation**



Click **Finish** to complete the installation process. You may be prompted to restart your computer.

# ARCHICAD Licensing

When you start ARCHICAD, the program automatically checks to see if you have a license available. If so, you are ready to work.

To update, download and otherwise manage your license keys, use the License Manager Tool, available at

<http://www.graphisoft.com/downloads/licensing/>.

## Hardware Key

The Hardware Key (Dongle) contains your license information on a USB stick. Before you start using the latest version of ARCHICAD, this Hardware Key must be updated.

For the update process, use the License Manager Tool:

<http://www.graphisoft.com/downloads/licensing/>.

Start the License Manager Tool (LMT) and follow the directions to update your Hardware Key.

<http://helpcenter.graphisoft.com/guides/license-manager-tool/update-your-licenses>

Now you are ready to use ARCHICAD 20.

**Note:** After updating your license key to ARCHICAD 20, you can still use older-version ARCHICADs (versions 10-19).

## Software Key

The Software Key is a software-based license. Using the License Manager Tool, a software key can be downloaded from the License Pool to a local client computer. To update your software key to the latest ARCHICAD version, start the License Manager Tool and follow the directions to update your license to the latest version.

<http://helpcenter.graphisoft.com/guides/license-manager-tool/update-your-licenses>



If you are using a single license and plan to work on a different computer, you should upload the software key to the License Pool, so that you can access it from a different location. (Internet connection is required.)

**Note:** If you are using a network license, there is no need to upload the software key to the license pool.

## Serial Number (Education Version or Trial Version)

If you are using the Education or Trial version of ARCHICAD, you must activate it when starting ARCHICAD, using a Serial Number. Students and Trial users can register to obtain a Serial Number that is valid for a limited time.

- If you are using a Trial Version and later obtain a commercial version, insert your Hardware Key (or download a Software Key), then start ARCHICAD. Open your projects and save them again, this time as full-version project files.
- The ARCHICAD Education Version cannot be converted to a commercial version, because it is designed for use by students or for educational purposes only. The Education Version cannot be used for commercial purposes.

## Demo Mode

When you start ARCHICAD, the program automatically checks to see if you have a license available. If you don't have a license at all, you can continue in Demo Mode.

Demo Mode gives you full functionality except file saving and Teamwork. Use Demo mode to open, view and try out functions using any ARCHICAD file.

The unavailable commands and menu items are disabled, and the ARCHICAD title bar changes to **ARCHICAD 20 Demo**.

Your ARCHICAD program may also be restricted to Demo mode for the following reasons:

- No key is attached to your computer
- All of your ARCHICAD licenses are in use
- Your Hardware Key is defective
- CodeMeter service is not running

## **Lost or Defective License Key**

In case of a lost or defective License Key, contact your local distributor.

---

# Add/Repair ARCHICAD

If you already have ARCHICAD installed, and start the **Installation Wizard**, you are given two options:

- 1) **Add** will add new features to your current installation. You will see all available features in a list and you can check features to be added to your current installation.
- 2) **Repair** will reinstall ARCHICAD with the features of your current installation. You can choose to save your customized settings/files in a backup folder. If you select this option, a “backup” folder will be created in your ARCHICAD 20 folder. The name of the backup folder will contain the ARCHICAD version and the date of creation. The backup folder will include:
  - your Add-on settings;
  - your ARCHICAD 20 Library;
  - your Work Environment schemes.

After the repair process is complete, you can either delete these files or reuse them by copying them back into your repaired ARCHICAD environment (follow the steps below). You can then continue to use these settings and files.

- 1) Copy your Add-On settings back to the respective sub-folders of your ‘ARCHICAD 20/Add-Ons’ folder;
- 2) Replace the library in the ‘ARCHICAD 20/ARCHICAD Library 20’ folder;
- 3) Replace your ‘Defaults’ folder in the ‘ARCHICAD 20’ folder (thereby including your current Work Environment, Translator and Template data).

Project files you saved into the ARCHICAD 20 folder will not be deleted or overwritten by the repair process.

**Note:** The Repair process will revert your ARCHICAD version to its default settings. After Repair, you must reinstall the latest ARCHICAD and Library updates.

# Updates

To check for available updates of your localized version of ARCHICAD or ARCHICAD libraries, start ARCHICAD 20 and go to the **Help** menu.

The **Check for Updates** command will open your Internet browser and guide you to the GRAPHISOFT update website. If there is no new update patch (hotfix) available for your release and language version of ARCHICAD, the web page will inform you that you are using an up-to-date version of ARCHICAD. If there is a new update patch available, the web page will automatically offer you the updater package that fits your current ARCHICAD installation.

You can choose to run the Check for Updates function automatically on a regular basis by setting the options at **Options > Work Environment > Network and Update**.

You can find other downloadable materials (example files, goodies etc.) at [www.graphisoft.com/support/archicad/downloads](http://www.graphisoft.com/support/archicad/downloads).

**Note:** If you have an updater patch installed and use the **Add/Repair** function of your original ARCHICAD 20 Installer DVD, you will be prompted to re-apply the updates after the modification or repair is carried out. The ARCHICAD update option is available to holders of the Commercial or Education ARCHICAD 20 license.

# Compatibility Information

## Opening Older-Version ARCHICAD Files

ARCHICAD 20 can open ARCHICAD project files from earlier versions beginning with 8.1.

You cannot open project files from earlier versions directly in ARCHICAD 20. Please use ARCHICAD 8.1 or later version to convert them to a usable file format.

*See ARCHICAD File Converters at <http://www.graphisoft.com/downloads/fileconverter.html>.*

We strongly recommend that you create an archive file (.pla) of each project you worked on with older ARCHICAD versions.

*See also the [Migration Guide in ARCHICAD Help](#).*

## Saving Project Files

ARCHICAD 20 can back-save project files in ARCHICAD 19 format only (among previous ARCHICAD file formats).

## Tools and Utilities

The following utilities are automatically installed on your computer together with ARCHICAD. However, it is possible to install them manually, if necessary, using the standalone installation packages available in the “Tools and Utilities” menu of the ARCHICAD 20 DVD.

Java runtime environment	Java 8 or newer is necessary to run ARCHICAD 20 installer/uninstaller. On Mac, Java comes with the operating system. On Windows, the ARCHICAD 20 or BIM Server installer will detect your Java environment and will install Java if needed.
CodeMeter system components	A Hardware Key driver (CodeMeter) will be installed as part of the installation process for ARCHICAD 20.
Adobe Reader	A PDF reader may be necessary to read the PDF documentation provided in the ARCHICAD 20/ Documentation folder. If needed, you can install this program by inserting the ARCHICAD 20 DVD and selecting the application from “Tools and Utilities”; or browse the DVD contents to locate the Adobe Reader application.

The following utilities are also installed with ARCHICAD 20. If you prefer not to install them, use Custom Installation and uncheck these options.

GRAPHISOFT Shell Extension	Optional, for Windows only. Utility for extended GRAPHISOFT file property information on Windows.
Documentation	PDF files offering help on using ARCHICAD and related functions.
ARCHICAD Help	Context-sensitive electronic Help files for ARCHICAD.
Plotter Drivers	With a typical install, ARCHICAD 20 will include a number of built-in drivers for a wide variety of HPGL compatible plotters.  If you are using a large-format printer, make sure you use a printer driver specified by the manufacturer, because its plotter function is only an emulation.

*For more information about additional utilities, open the folders of the applications in the ARCHICAD main folder to find detailed descriptions.*

# Uninstall ARCHICAD

To uninstall ARCHICAD 20 from Windows, it is best to use the “Programs” or “Add or Remove Programs” utility, accessible from the Control Panel.

On Mac, navigate to the “Uninstall.AC” folder in your ARCHICAD 20 folder, and select the “Uninstall.app” application.

The **Uninstall Wizard** will remove files which were installed by the ARCHICAD Installation Wizard. If you have more than one ARCHICAD installed, you may want to leave the CodeMeter and associated components installed on your system.

If your driver(s) were installed in the course of installing ARCHICAD 20, the uninstaller includes a checkbox option: **Remove hardware license driver(s)**. Make sure this option is unchecked if you do not want to remove your driver(s), particularly if you still have other ARCHICAD versions installed with which you will continue to work.

The uninstaller will not remove any files you have created in the ARCHICAD main folder - e.g. ARCHICAD project files that you saved into the ARCHICAD main folder.

**Important:** Do not remove the Java Runtime Environment before uninstalling ARCHICAD.

## Silent Uninstall

For both Windows and Mac, a silent mode is available for uninstalling ARCHICAD. Use this mode to run the uninstall process from beginning to end without any further user input.

**On Windows:** open the “Run” window from the Start menu. In Windows Explorer, navigate to the Uninstall.AC folder in the ARCHICAD folder. Drag uninstaller.exe into the command line; the path is copied to the command line.



Type the following after the path:

/silent

e.g.:

C:\Program

Files\GRAPHISOFT\ARCHICAD 20\Uninstall.AC\uninstaller.exe /  
silent

**Note:** If you want to avoid automatically restarting the computer after a silent uninstall, add the following to the end of the path:

/norestart

For example:

C:\Program

Files\GRAPHISOFT\ARCHICAD 20\Uninstall.AC\uninstaller.exe /  
silent /norestart

**On Mac:** open Terminal window, navigate to the Uninstall folder in the ARCHICAD install folder, then type:

uninstaller.app/Contents/MacOS/uninstaller -silent

e.g.: /Volumes/MyFolder/MySubfolder/ARCHICAD 20/

Uninstall.AC/uninstaller.app/Contents/MacOS/uninstaller -silent

**Note:** If you want to avoid automatically restarting the computer after a silent uninstall, add the following to the end of the path:

-norestart

For example:

/Volumes/MyFolder/MySubfolder/ARCHICAD 20/Uninstall.AC/  
uninstaller.app/Contents/MacOS/uninstaller -silent -norestart

# BIM Server for ARCHICAD 20

## Hardware/Software Requirements

Hardware/Software requirements are modified from time to time. For up to date information on system requirements, please consult the following link:

[http://www.graphisoft.com/support/system\\_requirements/AC20](http://www.graphisoft.com/support/system_requirements/AC20)

## Compatibility with ARCHICAD Clients

An ARCHICAD client can access only those Teamwork projects which are located on a BIM Server of the same version number as the ARCHICAD client.

If the ARCHICAD client's version number is different from the BIM Server version number, communication can take place only after you install a BIM Server of the same version number as the ARCHICAD client.

## Migrating the BIM Server

BIM Server for ARCHICAD 20 is a completely new installation.

- You cannot *automatically* migrate your BIM Server data (e.g. users or roles) from earlier BIM Server versions, but you can transfer certain BIM Server data manually, as described below.
- You cannot install BIM Server 20 as an additional module to an earlier version of BIM Server. (You can install it on the same

computer, but you must manage it separately with its own BIM Server Manager.)

## User Data from BIM Server for ARCHICAD 18 or 19

- 1) Install BIM Server for ARCHICAD 20.
- 2) Use the **Export** and **Import** commands of the Users and Roles pages of the BIM Server Managers to transfer User and Role data from BIM Server Manager 18/19 to BIM Server Manager 20. Use multi-selection to import/export multiple users and roles.

## User Data from BIM Server for ARCHICAD 17 and Earlier

The technology behind BIM Server for ARCHICAD 20 is fundamentally different from that of previous versions (ARCHICAD 17 and before), and you cannot transfer your BIM Server data (e.g. users or roles) from earlier server versions.

Install the new BIM Server and proceed to define users and roles as needed.

# BIM Server Installation

Start installation by clicking **Install GRAPHISOFT BIM Server** from the start-up menu of the ARCHICAD DVD/Download package.

## Program Folder Selection

After accepting the license agreement, you must define a location on your computer's hard drive for installing the BIM Server.

## Installation Process

After viewing the summary of your installation choices, click **Install** to begin the installation process.

Click **Next** to proceed through the wizard.

## Configure BIM Server

The BIM Server configuration process takes place after the installation. It involves the configuration of two components: BIM Server Manager and BIM Server Module.

Each step of the configuration process is described below.

## BIM Server Configuration, Step By Step

### 1) BIM Server Manager Configuration

**BIM Server Manager's basic settings**

Enter a display name for your BIM Server

Display name:  - BIM Server 20

Display name is used in ARCHICAD's server popups to easily identify your server, independent of the currently used address (which can be different for every user).

Select a communication port:

Port:

ARCHICAD will use the above port to connect to your BIM Server. Usage: <http://example.com:20000>

Create a password for the built-in "masteradmin" user:

Password:

Verify:

Log in using the "masteradmin" login name and the above password to troubleshoot your BIM Server.

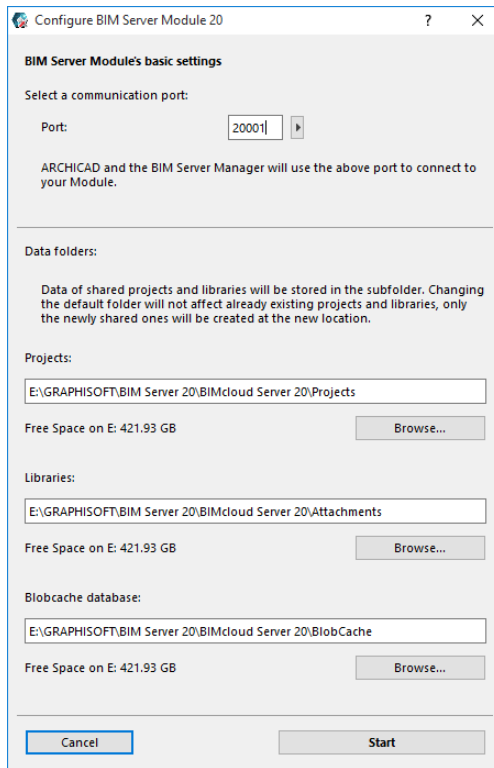
Data Folder

Free Space on E: 421.93 GB

- **Display name:** By default, the BIM Server will use the name of your computer. All server pop-ups will identify the BIM Server by this name (regardless of the address used to access it).
- **Port:** Select a free port, or use the “Find an available port” command to automatically find one.
- **Master Administrator password:** Create a secure password for the Master Administrator (masteradmin) user. This Master Administrator will always be able to log in to the BIM Server with full access to all hosted data. In case you forget the password, you must reconfigure your BIM Server and enter a new password.
- **Data folder:** This is the BIM Server Manager’s data storage folder.  
**Note:** Projects will be stored in a different folder - as defined in the next step.

Click **Next**.

## 2) BIM Server Module Configuration



- **Port:** Select a free port or use the “Find an available port” command to automatically find one.
- **Name:** Name of your Module.
- **Project data folder:** Enter or Browse the location of the default Project Data Folder. This will be the location of Teamwork Projects on this BIM Server.

- **Library data folder:** Enter or browse the location of the default Library Data Folder. This will be the location of Teamwork Libraries on this BIM Server.

Click **Start**.

### **3) Continue the Configuration in a Browser**

#### **4) Log In to BIM Server**

Enter the Master Administrator password to log in to the BIM Server.

#### **5) Create the First User**

Enter data for the first user. This user will automatically become the Server Administrator on the BIM Server. Fill in all the fields:

- Login name
- Password, Verify password
- Full Name
- Email address

## 6) Set up Server Address

### Set up server address

Enter the address which can be used to connect to this server from ARCHICAD:

Use your computer's name, fixed ip address or your company's domain. Examples:  
http://computer-name:20000 (network name of your computer)  
http://192.168.12.34:20000 (your computer's fixed IP address)  
http://bimserver.company.com:20000 (company domain name)

Read the [online guide](#) on recommended network settings.

[Show current addresses...](#) **Continue**

Enter the address at which you will access the BIM Server. This will be the “Primary Address” shown in BIM Server Manager.

## 7) Set Up Mail Server

Use these fields to define the mail server which will send information by email from the BIM Server to the users. The mail server definition can be modified later in the browser-based BIM Server Manager interface.

**Note:** Using a mail server is optional. However, if you don't define a mail server here, you won't be able to send emails (e.g. password reminders) to users from the BIM Server.

Click **Continue** to finalize configuration.

## 8) Complete Installation

It is recommended to log out as the Master Administrator now, and then log in as the newly created user. It is not recommended to use the Master Administrator account for everyday tasks.



# BIM Server Licensing

The BIM Server does not require a separate license, but the BIM Server must be activated before use.

Once you have installed and started the BIM Server, the BIM Server Manager interface will prompt you to activate it. This activation is free, one time only, and requires a GRAPHISOFT ID. If you do not have a GRAPHISOFT ID, the Activation process will help you to create one.

# Updates

BIM Server update packages may be available from time to time at the GRAPHISOFT update website:

<http://www.graphisoft.com/downloads/archicad/updates>.

Make sure that you use the same version number to update both the BIM Server and the client ARCHICADs.

When installing an update package, first disable your virus protection. On Windows, you must also stop Windows Server Manager.

After closing all open projects and programs, install the update on the BIM Server computer first. After updating the BIM Server, update the client machines.

After update, the Teamwork Project must be opened by a user who has the permission “Update to Later ARCHICAD Build” (this permission is included in the default **Lead Architect** and **Project/Server Administrator** role definitions). The project’s version number will be updated. Users with **Architect** or lesser roles cannot re-join the project until after the update is completed.

## Upgrade BIM Server to BIMcloud

If you would like to extend your BIM Server, or if you would like to connect multiple BIM Servers under the same Management interface, you can upgrade the BIM Server to a BIMcloud.

This upgrade process requires a purchased BIMcloud license.

The upgrade process is not reversible; it is not possible to downgrade a BIMcloud to a BIM Server.

*See “Upgrade a BIM Server” in the [BIMcloud and BIM Server User Guide](#).*

# Uninstall BIM Server

To uninstall the GRAPHISOFT BIM Server, you can use the Uninstall BIM Server shortcut, located in the BIM Server's installation folder. Double-click this shortcut to begin the uninstall process.

Within the uninstaller, you can choose whether to:

- **Completely uninstall** the BIM Server: Removes all components from your computer; option to also remove all data (users and projects).
- **Uninstall BIM Server Manager only.** This will remove only the BIM Server Manager component, leaving the BIM Server Module and your projects on this machine intact. Use this option if you wish to connect your BIM Server to an existing BIMcloud.

*For details, see the [BIMcloud and BIM Server User Guide](#).*

To uninstall the GRAPHISOFT BIM Server from Windows, it is best to use the “Programs” or “Add or Remove Programs” or “Programs and Features” utility, accessible from the Control Panel.

# ARCHICAD Network Installation (Instructions for BIM Managers)

With a Commercial and certain Education licenses, GRAPHISOFT offers you the option of creating an Installation package that contains your company-standard settings.

Using this installation package, you can save time by installing ARCHICAD 20 at multiple workstations according to your customized, company-preferred configuration.

The following settings can be predefined in the network installation package:

- Work Environment settings;
- DXF/DWG Translators and IFC Translators
- Project templates

To do this, choose the special installation option that automatically records your installation process and creates the installation package. The resulting install file can then be started on any number of client machines. This process is detailed below.

**Note for Educational Institutions:** If your ARCHICAD license is registered to an educational institution, you can use the Installation Package Creation process to create a recorded installation and simplify the installation of multiple identical copies of the program - even if you wish to use factory defaults instead of custom-defined settings.

## Network Installation Step by Step

To create a custom installation package, follow these steps:

### 1) Single-user Installation

The first step is to do a Standard installation of ARCHICAD on a single client machine.

Follow the instructions at [“Install ARCHICAD 20: Single License” on page 6](#). Choose the “Typical” Setup.

Next, set up your preferred Work Environment/Template/DXF-DWG and IFC translators, as described below:

### 2) Customize Work Environment Settings

Start ARCHICAD, then use the dialog boxes at **Options > Work Environment** to set up your company standard Work Environment settings. Most such options are found in three dialog boxes of Company Standard Schemes: **Data Safety & Integrity**; **Network and Update**; and **Special Folders**.

Once you have set these options, save these settings as schemes, then save the schemes in a company-default profile. To save a profile, go to **Options > Work Environment > Work Environment Profiles**.

### 3) Customize Templates

Create and save any number of template files. Template files include links to libraries loaded through Library Manager (e.g. “Office Standard Library”). Templates can also include Project Preferences (e.g. Working Units, Zone calculation preferences), and such items as Master Layouts, Project Info, placed elements (e.g. Elevation markers, entire buildings).

Save each template using **File > Save as...** (ARCHICAD Template file \*.tpl).

### 4) Customize DXF-DWG Translators

Use the **DXF-DWG Translation Setup** dialog box (**File > File Special > DXF-DWG Translation Setup**, to set up DXF/DWG

Translators and save them to a shared folder on a server. A DXF-DWG TranslatorList.xml file is also created, which is a list of references to these translators.

### 5) Customize IFC Translators

Use the **IFC Translation Setup** dialog box (**File > File Special > IFC Translation Setup**) to set up IFC Translators and save them to a shared folder on a server. An IFC TranslatorList.xml file is also created, which is a list of references to these translators.

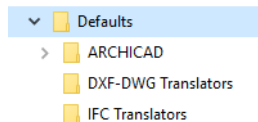
### 6) Quit ARCHICAD

### 7) Create “Defaults” Folder

Create a Defaults folder.

Within the Defaults folder, create three sub-folders named as follows:

- ARCHICAD
- DXF-DWG Translators
- IFC Translators



Add your saved, customized defaults using the folders and files as described below.

- Add your saved “WorkEnvironment” folder and its contents to the **Defaults/ARCHICAD** folder

***Where to find saved WorkEnvironment folder:***

*Users\<Username>\AppData\Roaming\Graphisoft\ARCHICAD-64 xx.0.0 yyy (Windows)*

*~/Library/Preferences/Graphisoft/AC-64 xx.0.0 yyy (Mac)*

*where xx stands for the version number of ARCHICAD and yyy is the language version of ARCHICAD.*

- Add your saved Template file(s) (extension .tpl) to the **Defaults/ARCHICAD** folder.
- Add the contents of the saved Translators folders to the **Defaults/DXF-DWG Translators** folder and the **Defaults/IFC Translators** folder, respectively.

***Where to find saved Translator folders:***

*Users\<Username>\Graphisoft\Translators xx.0.0. yyy (Windows)*

*~/Library/<Username>/Graphisoft/Translators xx.0.0. yyy (Mac)*

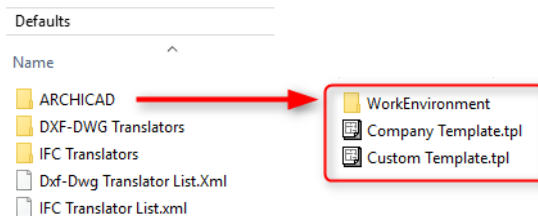
- Add the IFC Translator List.xml file to the **Defaults** folder.

- Add the DXF/DWG Translator List.xml file to the **Defaults** folder.

**Where to find the Translator List XML files:**

*Users\<Username>\AppData\Roaming\Graphisoft\  
ARCHICAD-64 xx.0.0 yyy R1\IFC or Dxf-Dwg  
Preferences\ (Windows)  
~/Library/Preferences/Graphisoft/AC-64 xx.0.0 yyy  
v1. (Mac)*

Final structure of the Defaults folder:



## 8) Uninstall ARCHICAD; Re-start Installation

Uninstall ARCHICAD from your computer, then run the Installer again.

Alternatively, run ARCHICAD Installer on the server or on another machine.

## 9) Start-up Presentation

After you insert the ARCHICAD DVD, or double-click on (extract) the ARCHICAD 20 Download folder, the start-up presentation will be launched.



## 10) Start Installation Wizard

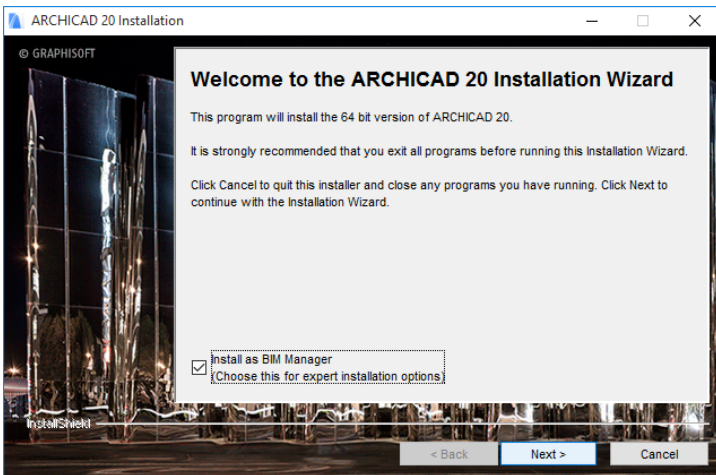
Click on **Install GRAPHISOFT ARCHICAD** to start the ARCHICAD Installation Wizard.

## 11) Welcome Screen

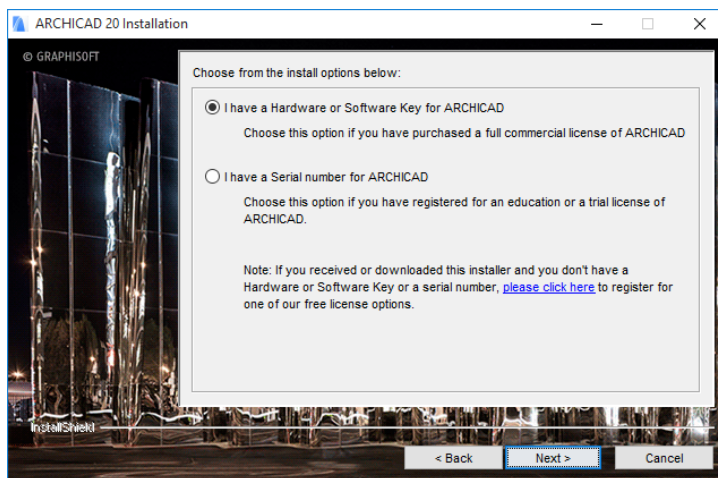
Make sure that you close all running programs before you proceed with the installation.

Click the option for **Install as BIM Manager**.

Then click **Next**.



## 12) Choose License Type



Click the option that corresponds to your license type: **Hardware or Software Key** for ARCHICAD, or a **Serial Number** (for Education and Trial Licenses).

Then click **Next**.

## 13) License Agreement

Read the license agreement carefully and accept it, then click **Next**.

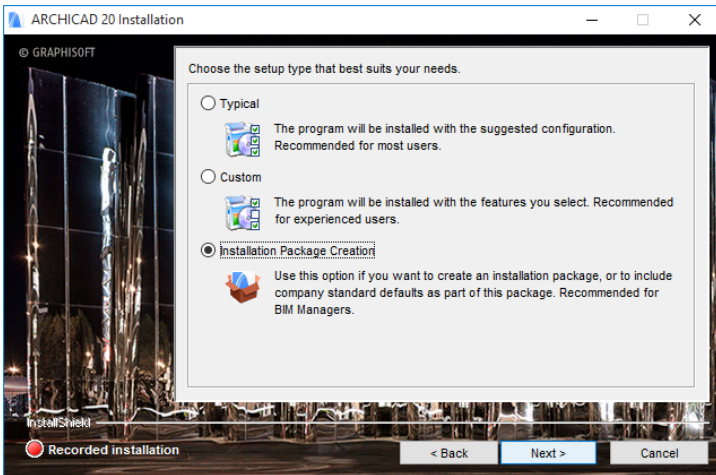
## 14) Program Folder Selection

On this page, you can define the file path of the installation. As a rule, you should choose the path suggested by default, to simplify the installation of any future updates.

To confirm the file path, click **Next**.

## 15) Choose Setup Type

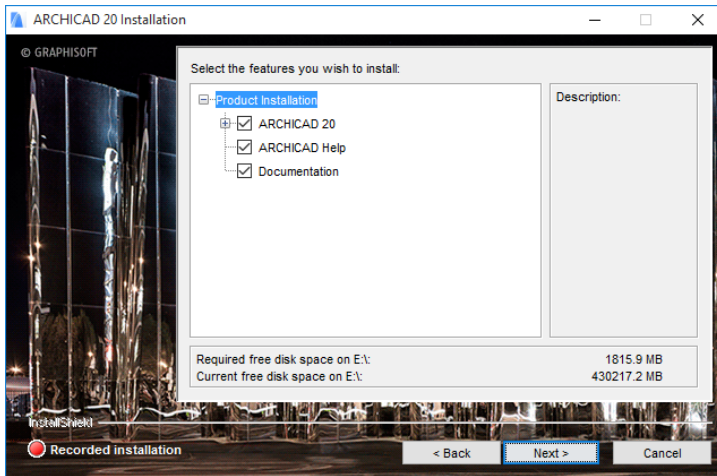
To prepare for Network installation, choose the option for **Installation Package Creation**.



The screens of the Installation Wizard will now show the message “Recorded Installation.”

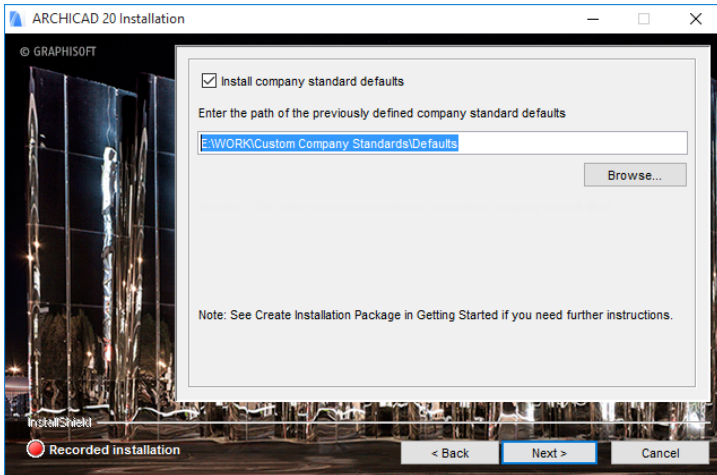
## 16) Choose Program Components

Select the features you wish to install.



After you make your choice, click **Next**.

## 17) Install Company Standards

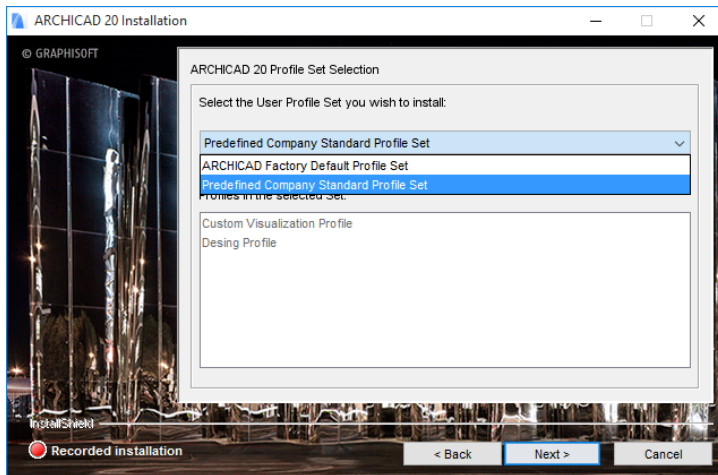


Check **Install Company Standard Defaults**, and enter the file path location of the Defaults folder (containing Work Environment/Translators/Templates) which you created earlier. ([See Create “Defaults” Folder at Step 7 above.](#))

Click **Next**.

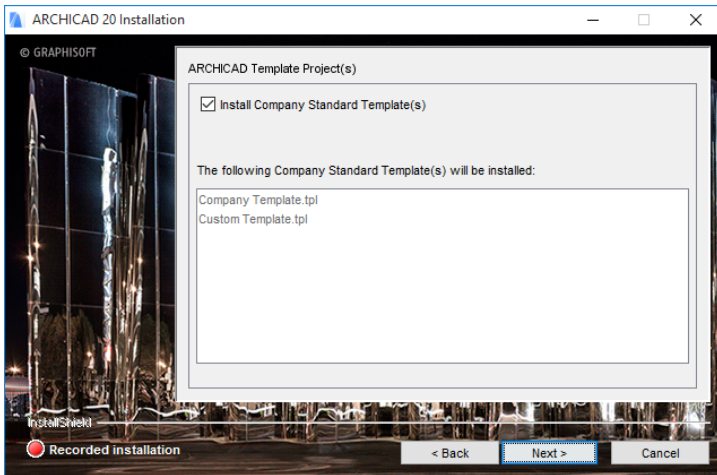
## 18) Install Customized Work Environment

Choose **Predefined Company Standard Profile Set** to include your customized Work Environment in the Installation Package.



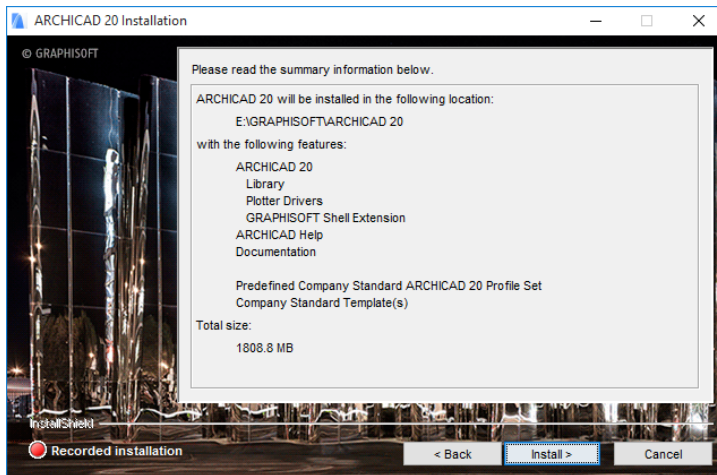
## 19) Install Company Standard Template(s)

Check this box to include your saved Template in the Installation Package.



## 20) Installation Summary

This screen summarizes your chosen configuration, so you can make any needed corrections to the installation settings.



Click **Install** to begin installation.

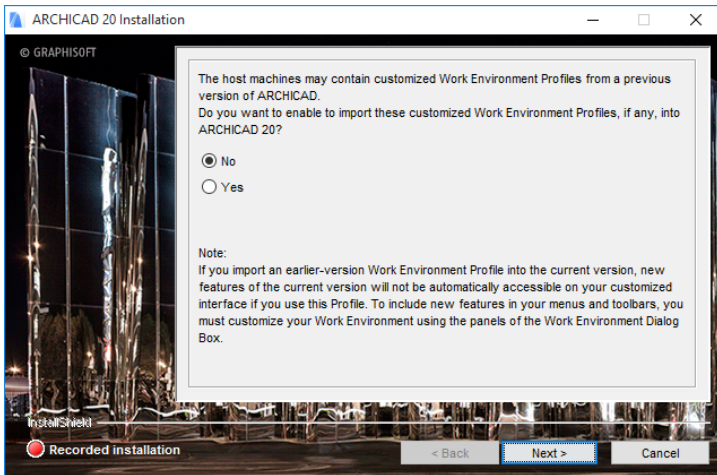
## 21) Installation

Depending on your hardware, this process may take several minutes.



## 22) Import Work Environment

Do not import any older-version Work Environment; do not change the default choice.



Click **Next**.

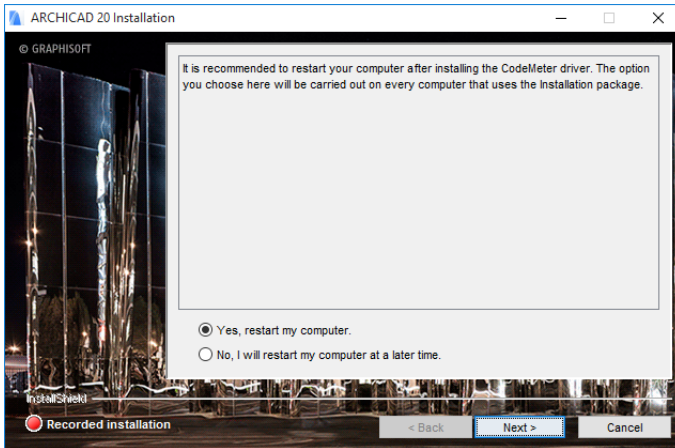
## 23) Shortcuts/Automatic Updates

Here you can create an “ARCHICAD 20” Desktop shortcut.

Review the setting to **Enable ARCHICAD to Check for Updates automatically** (checked by default).

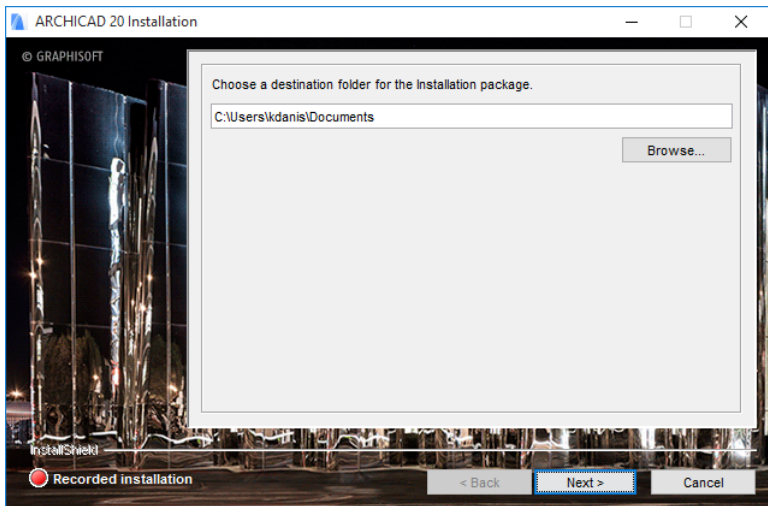
Click **Next**.

- 24)** If the installation process includes installing CodeMeter, you are prompted to restart your computer now. If you click Yes (recommended), the restart will be carried out on every client computer that uses the install package.



## 25) Define File Path

Define a file path location for the Installation Package, then click **Next** to confirm.



The Installation Package will now be written. Depending on your hardware, this process may take several minutes.

Click **Finish** to close the Installer. You may be prompted to restart your computer.

You have now created an Installation Package. Users who start this package on a client machine will not encounter any options in the Installation wizard, and the installation process will begin immediately.

# Using a CodeMeter Server

If you would like to use network licenses (e.g. instead of single licenses), you will need a CodeMeter hardware key or software key. Contact your local GRAPHISOFT partner to order one or to exchange your existing single key(s).

## Single or Network Keys

A so-called **single key** can hold one license for each GRAPHISOFT product (ARCHICAD, MEP, EcoDesigner STAR, BIMx) and can be used locally. You connect the hardware key to your computer's USB port or download the software key with License Manager Tool (LMT); if you have the CodeMeter driver installed (it is installed with ARCHICAD), your GRAPHISOFT product will find a license and will run in commercial mode. Each workstation in an office needs to have an individual key.

A **network key** can hold multiple licenses related to each product (ARCHICAD, MEP, EcoDesigner STAR, BIMx). To share them across multiple computers you need a CodeMeter server. This arrangement provides more flexibility than having individual keys, as the licenses are allocated only when they are being used on one of the clients.

## System Requirements for a CodeMeter Server

The CodeMeter server is part of the CodeMeter driver, so you only need to select a computer on your network that will act as a CodeMeter server. To set up a CodeMeter server as a network license server, you will need the following:

- A computer with network connection (should be running during work hours).
- The computer must have at least one free USB port, for hardware key only.

- CodeMeter driver must be installed. Click on **Tools and Utilities** from the start-up screen, or browse your DVD directory for the CODEMETER folder.

**Note:** There is no need for a server-level operating system for the CodeMeter server. You can use one of the workstations as a CodeMeter server, and you must keep it running during work hours. Any computer that has recent Windows or OS X versions can be used (Windows 7, 8, 8.1, 10, and OS X 10.8, 10.9, 10.10).

## Set Up the Server

After you have your server running and the CodeMeter driver is installed, start the server as described below. All CodeMeter settings can be managed in CodeMeter WebAdmin. To start it:

- Open CodeMeter Center (from Applications or using the Start menu) and click on WebAdmin;
- or simply open localhost:22350 on your browser.

To enable the CodeMeter server:

- 1) Go to Configuration/Server tab.
- 2) Check Run Network Server checkbox.
- 3) Do not forget to **Apply the changes**.
- 4) Restart CodeMeter service (on Mac: System Preferences/CodeMeter, on Win: CodeMeter Control Center)

From that point, the server runs and shares licenses on the local network.

- Check **Run CmWAN Server** checkbox to use the computer in a wide area network (WAN) and allow license accesses.
- Do not forget to **Apply the changes** and restart CodeMeter service.

## Client Side Settings

All clients on the local network should find the server automatically. In case this does not work (e.g. your server is in a different subnet, or you are connecting remotely through the Internet), then you may need to specify the server's hostname IP address. On the client:

- 1) Open WebAdmin.
- 2) Configuration/Network.
- 3) Add the server to the Server Search List.

This field can have multiple entries; the client searches for available licenses in the specified order and only on the specified servers. Only when the list is empty does the client search for other available servers.

## Access Control

With the default settings, all computers on the same local network (same subnet) can use a license from the server.

To restrict access:

- 1) Open WebAdmin.
- 2) Go to Configuration/Access Control.

If the Clients' list is empty, anyone on the local network can use a license. If at least one entry is listed here, only the listed entries can request a license.

**Note:** If the server is public on the Internet, or no one is allowed to use a license, make sure that this list is filled out correctly to avoid unwanted license usage.

You may want to check who is using a license:

- 1) Open WebAdmin on the server computer.
- 2) Go to Server/User tab.

Here you can see a list of active clients and clients who have borrowed licenses.

## Set Up License Borrowing

If your network key has a license borrowing product, the clients can borrow a license.

*For more information on License Borrowing, see <http://helpcenter.graphisoft.com/?p=25723>.*

**IMPORTANT NOTE:** Make sure all licenses are returned/ expired before you do any of the following:

- Upgrade the licenses on upgrade site.
- Install a new main version of ARCHICAD.
- Unplug the server CodeMeter key from the computer or transfer it to a different one (even one with the same network specification).
- Uninstall or reinstall the CodeMeter driver (updating it is fine).
- Re-install the Operating system.
- Change the IP address of the server computer.

There is no additional setting needed to enable license borrowing but you may customize the following settings.

## Borrow Duration

By default the borrowed licenses are valid for 30 days. If the license is not returned within this period, the license will expire and will be automatically returned to the server. To customize this maximum time (up to 30 days):

- 1) Open WebAdmin.
- 2) Go to Configuration/Borrowing.
- 3) Set the preferred Maximum Borrow Duration, in minutes.

## Maximum Number of Borrowable Licenses

You can also maximize the number of licenses available for borrowing. Enter the preferred number in the 'Maximum Borrow Quantity' field. This value cannot exceed the available license quantity of the borrowing product.

**Note:** Start License Manager to see the number of available licenses, including the number of LBRK (for hardware based borrowing) or LBRA (for software license borrowing) products.

## Server Identification

Each client identifies the server by either host name or IP address. This can be customized on the server level, so when the server issues the license, the client gets the chosen address and will try to return the license to the given address. On networks with reliable DNS settings, Server name identification is the best choice, but on networks without it, or in mixed platform environment (Mac & Windows), choose identification based on IP addresses. In that case it is important to use static IP address for the Server.

**Note:** To customize all of these settings (Borrowing settings and Server Identification), check the Overwrite Entry Settings box in the License Borrowing interface of the WebAdmin.

It is strongly recommended to test the borrow environment. Set a relatively short Borrow Duration and you can test your setup without risking the loss of a license for a long period.